

# 2025 BHSA CPP PROCESS

PHASE 1: OUTREACH & INPUT	PHASE 2: RECOMMENDATIONS	PHASE 3: ALIGNMENT
April   May   June	July   August   September	October   November   December
<b>FOCUS:</b> Foundation Building + Outreach & Input	<b>FOCUS:</b> Workgroup Recommendations	<b>FOCUS:</b> Stakeholder Agreement

## FOUNDATION BUILDING

### *BHSA CPT*

- Affirms Shared Vision.
- Charters Workgroups focused on Integrated Plan topics.
- Analyzes MH & SUD Systems, Data & Disparities.

## WORKGROUPS

- CPP meetings are open to the public for full participation.
- Workgroups conduct analysis focused on specific topics and produce recommendations to the BHSA CPT for the Integrated Plan, addressing disparities.

## BHSA CPT

- Completion IP topics presentations
- Reviews Workgroup recommendations for the Integrated Plan.
- Align on key recommendations for the Integrated Plan.

## OUTREACH & INPUT

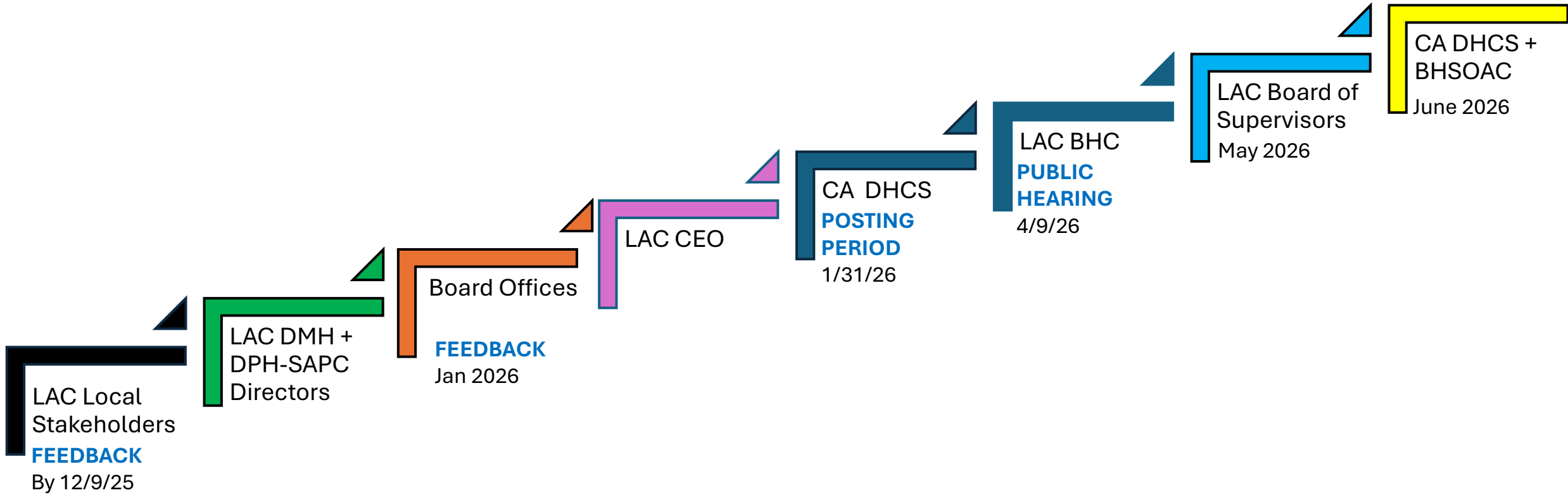
*Stakeholder* Forums, Focus Groups, Interviews

# 2026 BHSA INTEGRATED PLAN APPROVAL

## Phase 4: INTEGRATED PLAN APPROVAL

<b>DRAFT</b> INTEGRATED PLAN	<b>POST</b> INTEGRATED PLAN	<b>HOLD</b> PUBLIC HEARING	<b>APPROVE</b> INTEGRATED PLAN		
JANUARY	FEBRUARY	APRIL	MAY	MAY/JUNE	JUNE
<ul style="list-style-type: none"> <li>• Department Directors review.</li> <li>• Complete draft of Integrated Plan.</li> <li>• LA County Counsel vets Integrated Plan.</li> <li>• Summarize Integrated Plan in plain language.</li> <li>• Translate Integrated Plan.</li> <li>• Presentation of draft to BHC (1/8)</li> <li>• Begin 30-day Public Posting Period</li> </ul>	<ul style="list-style-type: none"> <li>• Collect and summarize all stakeholder feedback over 30-Day Public Posting Period</li> </ul>	<ul style="list-style-type: none"> <li>• Los Angeles County Behavioral Health Commission holds a Public Hearing on the Integrated Plan and proposes changes (if any).</li> </ul>	Los Angeles County Board of Supervisors reviews Integrated Plan, makes changes (if any), and votes to approve.	California Department of Health Care Services (DHCS) - Submission and review.	Commission for Behavioral Health (CBH) - Submission and review.

# BHSA INTEGRATED PLAN: *Approval Roadmap*



# REMAINING BHSA CPT MEETINGS FOR 2025

<b>11/14/25</b>	<b>11/18/25</b>	<b>12/9/25</b>
<ol style="list-style-type: none"><li>1. Budget Overview</li><li>2. Overview of 2026 Calendar for Integration, Implementation &amp; Monitoring</li><li>3. Overview of Structure for the Integrated Plan</li></ol>	<ol style="list-style-type: none"><li>1. Housing Interventions</li><li>2. Residential SUD Treatment</li></ol>	<ol style="list-style-type: none"><li>1. Prevention</li><li>2. Early Intervention</li><li>3. Child/TAY Continuum</li></ol>

You can access materials for sessions by using the following link:

[MHSA Announcements - Department of Mental Health \(lacounty.gov\).](#)

# BHSA CPT 2026

JAN	FEB	MAR	APR	MAY	JUN	JUL	AUG	SEP	OCT	NOV	DEC
20*	10	10	14	12	9	14	11	8	13	10	8
<p><b>BHSA INTEGRATED PLAN APPROVAL PROCESS + IMPLEMENTATION PLANNING</b></p> <ul style="list-style-type: none"> <li><b>INTEGRATED BEHAVIORAL HEALTH VISION:</b> <i>How do we serve the needs of clients in shared areas?</i></li> <li><b>BEHAVIORAL HEALTH OUTCOMES, ACCOUNTABILITY, &amp; TRANSPARENCY REPORT:</b> <i>Developing a data system to help eliminate inequities and advance justice.</i></li> </ul>						<p><b>IMPLEMENTATION MONITORING</b></p> <ul style="list-style-type: none"> <li><b>BEHAVIORAL HEALTH INTEGRATION TOPICS:</b> <i>Deeper dives into different programs or levels of care in the LA County behavioral health continuum of care.</i></li> </ul>					

\* Recently added a session on 01/20/26 to share the Draft BHSA Integrated Plan