



Behavioral Health Services Act

Community Program Planning Process




LOS ANGELES COUNTY
DEPARTMENT OF
MENTAL HEALTH
hope. recovery. wellbeing.



COUNTY OF LOS ANGELES
Public Health
Substance Abuse Prevention and Control





Presentation by the
Departments of Mental Health and
Public Health – Substance Abuse Prevention and Control
November 13, 2025

Current Structure for the CPP
Roadmap to Integrated Plan Approval
Enhancing Diversity in Stakeholder Participation
2025 Remaining CPT Meetings
2026 CPT Calendar



2025 BHSA CPP PROCESS

PHASE 1: OUTREACH & INPUT	PHASE 2: RECOMMENDATIONS	PHASE 3: ALIGNMENT
April May June	July August September	October November December
FOCUS: Foundation Building + Outreach & Input	FOCUS: Presentations of Services, Forums for Stakeholder Education, Input & Recommendations	FOCUS: Finalize Stakeholder Agreement

FOUNDATION BUILDING

BHSA CPT

- Affirms Shared Vision.
- Charters Forums focused on Integrated Plan topics.
- Analyzes MH & SUD Systems, Data & Disparities.

CPP MEETINGS & FORUMS

- CPP meetings are open to the public for full participation.
- Forums conduct analysis focused on specific topics and produce recommendations to the BHSA CPT for the Integrated Plan, addressing disparities.

BHSA CPT RECOMMENDATIONS

- Completion of CPP Meetings and Forums
- Reviews meeting and forum recommendations for the Integrated Plan.
- Align on key recommendations from the CPT for the Integrated Plan.
- **Meet with BHC to receive recommendations for Integrated Plan**

OUTREACH & INPUT

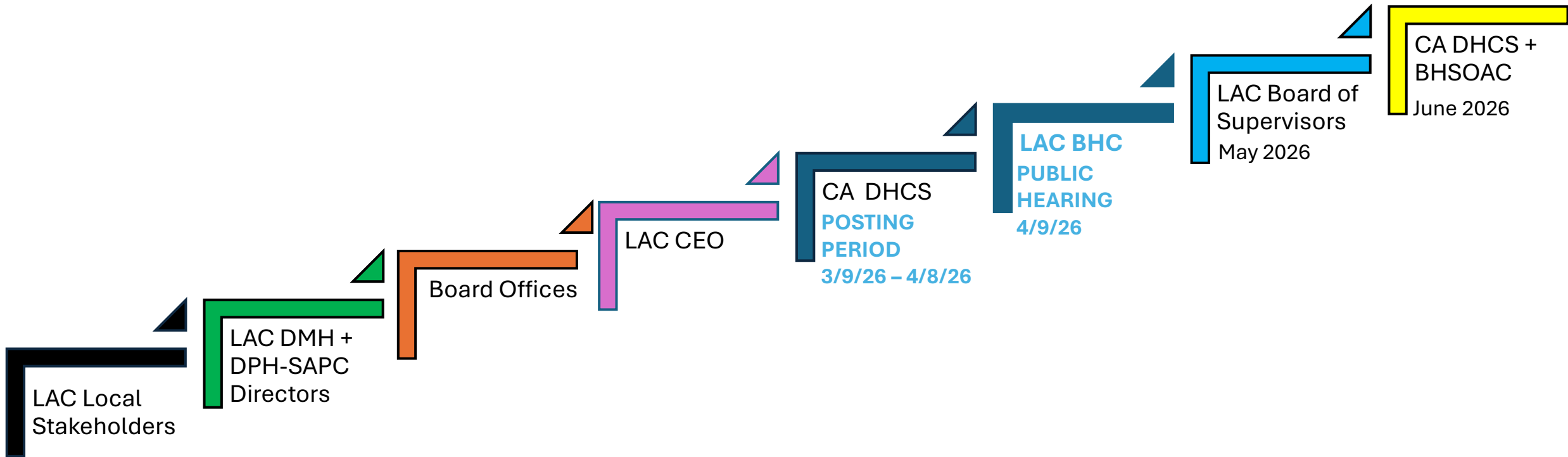
Stakeholder Forums, Focus Groups, Interviews

2026 BHSA INTEGRATED PLAN APPROVAL

Phase 4: INTEGRATED PLAN APPROVAL

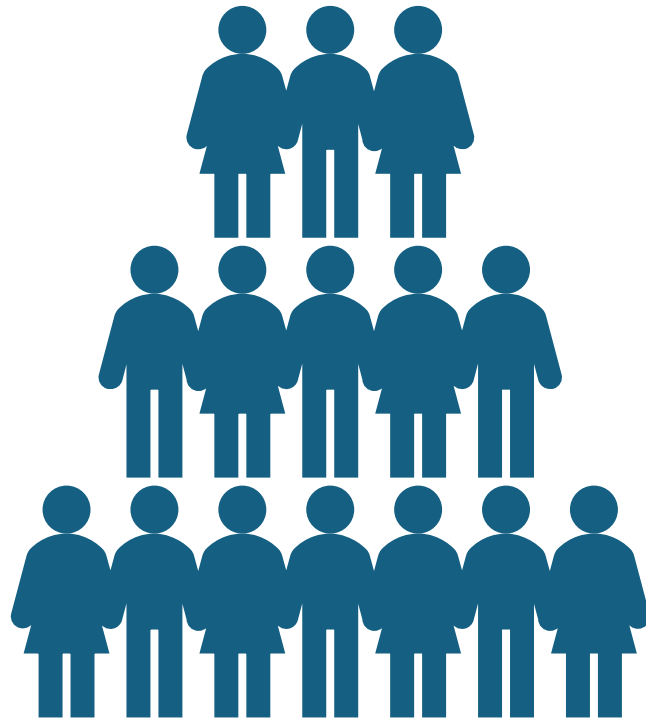
DRAFT INTEGRATED PLAN	POST INTEGRATED PLAN	HOLD PUBLIC HEARING	APPROVE INTEGRATED PLAN		
JANUARY	FEBRUARY	APRIL	MAY	MAY/JUNE	JUNE
<ul style="list-style-type: none"> • Department Directors review. • Complete draft of Integrated Plan. • LA County Counsel vets Integrated Plan. • Summarize Integrated Plan in plain language. • Translate Integrated Plan. • Presentation of draft to BHC (1/8/25) • Begin 30-day Public Posting Period 	<ul style="list-style-type: none"> • Collect and summarize all stakeholder feedback over 30-Day Public Posting Period 	<ul style="list-style-type: none"> • Los Angeles County Behavioral Health Commission holds a Public Hearing (4/9/26) on the Integrated Plan and proposes changes (if any). 	<p>Los Angeles County Board of Supervisors reviews Integrated Plan, makes changes (if any), and votes to approve.</p>	<p>California Department of Health Care Services (DHCS) - Submission and review.</p>	<p>Commission for Behavioral Health (CBH) - Submission and review.</p>

BHSA INTEGRATED PLAN: *Approval Roadmap*



CPT FEEDBACK
Compiled by end of
Dec 2025
Update to the BHC
12/8/25

Enhancements Made to the CPP to Expand Diversity of Stakeholder participation



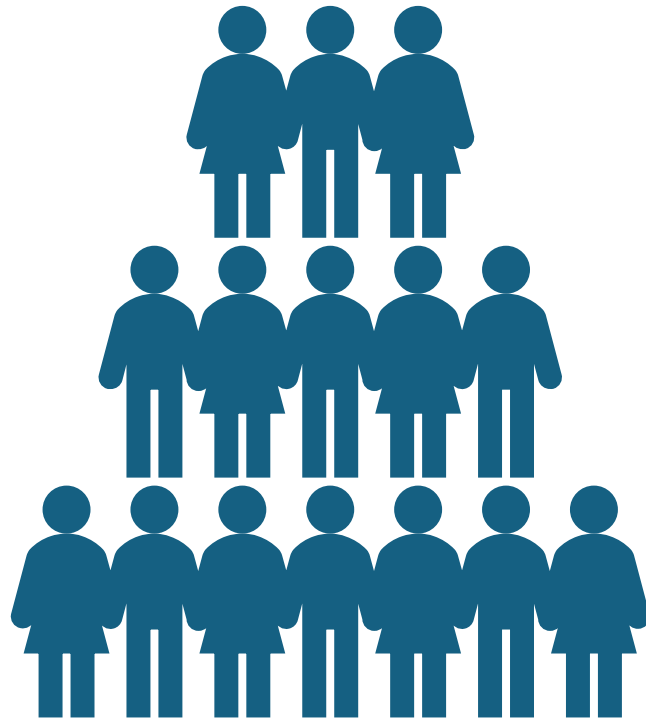
The transition to the CPT framework (previously YourDMH) for the CPP expanded DMHs reach for stakeholder engagement and input by broadening the categories and number of stakeholder voices that were formal members of the CPT. This transition increased the diversity of stakeholder perspectives and set the stage for incorporating SUD partners towards the BHSA Integrated Plan. The current CPT membership is comprised of 160 seats that represent the following categories:

SALTs; (2) UsCCs; (3) contracted mental health providers; (4) FBAC; (5) other county departments, including Fire/First Responders, Health, Justice and Care Opportunities, Public Health, CEO, Aging and Disabilities, Youth Development; Sheriffs, DCFS, Public Defender, Probation, Military & Veterans Affairs, Parks, and Libraries; (6) youth council; (7) school districts; (8) LACOE; (9) community colleges district; (10) public universities; (11) veterans; (12) homeless and housing; (13) peers/individuals with lived experience/families; (14) mental health commission; (15) psychiatric hospitals; (16) First 5 LA; (17) Health Neighborhoods countywide; (18) Cities in LA County with separate health depts (Long Beach and Pasadena); (19) CCC; (20) NAMI; (21) Regional Center; and (22) Health Plans

Voices from members of the public are also received and considered in the CPP process under CPT framework.

Enhancements Made to the CPP to Expand Diversity of Stakeholder participation

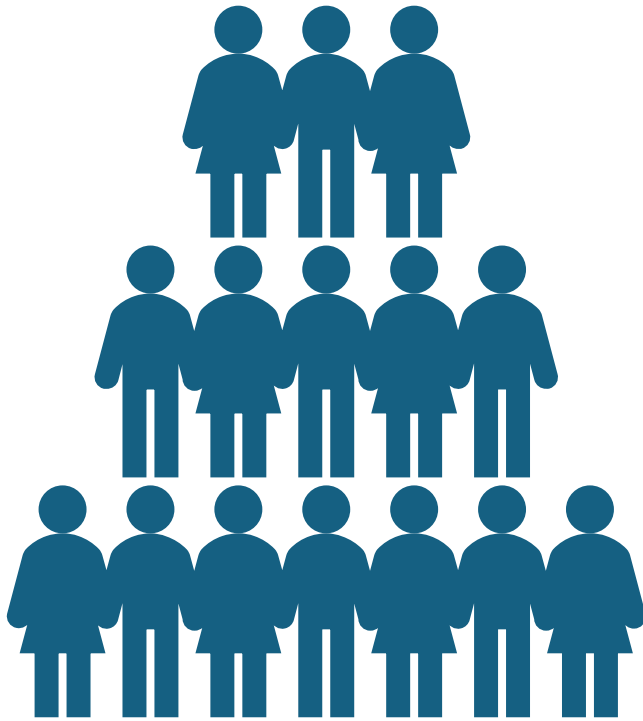
Additional strategies implemented to enhance diversity of stakeholder participation in CPP:



- Providing multiple options for attending meetings and providing input/feedback, including hosting hybrid CPT meetings, conducting hybrid subject matter forums that focus on specific topics-for focused discussion and input
- Aligning with existing meetings for stakeholder groups to capture their input and feedback (e.g. Youth)
- Offering stakeholders and the public a dedicated mailbox to make inquiries, provide input and feedback 24/7 (communitystakeholder@dmh.lacounty.gov)
- Providing educational sessions and updates and collecting feedback in monthly Community Meetings outside of regular business hours (evenings and Saturdays).

Enhancements Made to the CPP to Expand Diversity of Stakeholder participation

Additional strategies implemented to enhance diversity of stakeholder participation in CPP



- Use of a listserv to ensure CPT meeting information and content is distributed widely for each meeting as well as info for other County and State related Webinars and informational sessions (5,286 subscribers to date)
- Aligning with BHC to select individuals for specific CPT stakeholder categories to ensure diverse perspectives are represented for those categories
- Posting all CPP related meeting announcements, content, information on locations, virtual links and recordings on DMH’s public facing website
- Developing a series of short videos “MHSA/BHSA 101” posted at the DMH public facing website for interested individuals to learn about the CPP, its history, current structure, and how to participate in the process

2025 BHSA CPT MEETINGS

11/14/25	11/18/25	12/9/25
<ol style="list-style-type: none">1. Budget Overview2. Overview of 2026 Calendar for Integration, Implementation & Monitoring3. Overview of Structure for the Integrated Plan	<ol style="list-style-type: none">1. Housing Interventions2. Residential SUD Treatment	<ol style="list-style-type: none">1. Prevention2. Early Intervention3. Child/TAY Continuum

You can access materials for sessions by using the following link:

[MHSA Announcements - Department of Mental Health \(lacounty.gov\).](#)

2026 BHSA CPT

JAN	FEB	MAR	APR	MAY	JUN	JUL	AUG	SEP	OCT	NOV	DEC
N/A	10	10	14	12	9	14	11	8	13	10	8

BHSA INTEGRATED PLAN APPROVAL PROCESS + IMPLEMENTATION PLANNING

- **INTEGRATED BEHAVIORAL HEALTH VISION:** *How do we serve the needs of clients in shared areas?*
- **BEHAVIORAL HEALTH OUTCOMES, ACCOUNTABILITY, & TRANSPARENCY REPORT:** *Developing a data system to help eliminate inequities and advance justice.*

IMPLEMENTATION MONITORING

- **BEHAVIORAL HEALTH INTEGRATION TOPICS:** *Deeper dives into different programs or levels of care in the LA County behavioral health continuum of care.*

Behavioral Health Services Act Community Program Planning Process

Thank You for Your Attention!